

RT2—ROTATING TORQUE TRANSDUCER



FEATURES

- Ratings 5—500Nm
- Sealed to IP40.
- Accuracy $\pm 0.2\%$ FS.
- Rotational Speed 4000 rpm

APPLICATIONS

- Test Machines
- Process Control.

DESCRIPTION

The TQ-RT2 provides a key slot design device for measuring rotational torsion up to 4000 rpm. The RT2 is produced from stainless steel with an aluminium housing.

Options: Square drive, amplified output of $\pm 10V$.

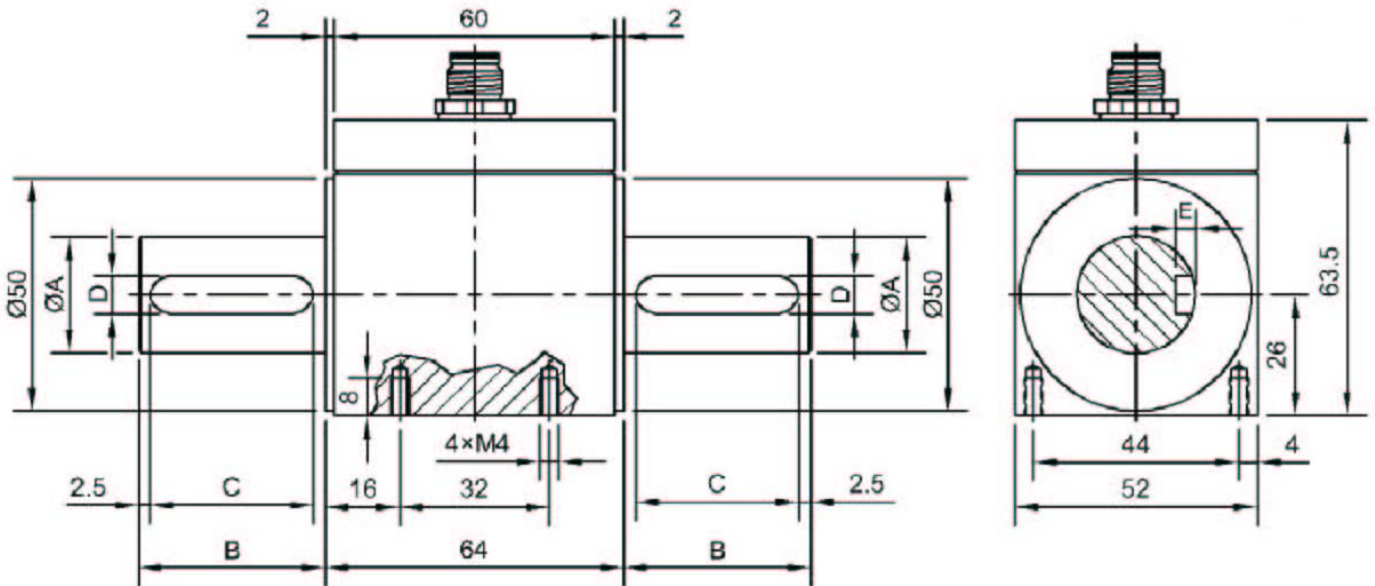
The load cell has been designed for test rig applications.

TYPICAL SPECIFICATION

PARAMETER	RT2	RT2A
Static Torque	25, 50, 100, 250, 500 Nm	5, 10, 25, 50, 100, 250, 500 Nm
Rated Output	25Nm 1mV/V $\pm 0.2\%$ 50-500Nm 2mV/V $\pm 0.2\%$	$\pm 10V \pm 0.2\%$
Linearity & Hysteresis	0.2%	0.2%
Zero Return after 30 minutes	0.03	$\pm\%$ of Applied Load
Zero Balance	± 0.5	%
Temperature Range: Operating Temperature Range: Compensated	-10 to +70°C -10 to +70°C	-10 to +70°C -10 to +70°
Temperature Effect: On Output Temperature Effect: On zero	$\pm 0.02\%$ of FS $\pm 0.02\%$ of FS	$\pm 0.02\%$ of FS $\pm 0.02\%$ of FS
Safe Overload	150	% of Rated Capacity
Ultimate Overload	300	% of Rated Capacity
Excitation: Recommended Excitation: Maximum	10 VDC 15 VDC	15-24VDC 28VDC (Max 30mA)
Input Resistance	440 Ohms nom	NA
Output Resistance	350 Ohms nom	NA
Insulation Resistance	$> 2G\Omega$ at 50VDC	$> 2G\Omega$ at 50VDC
Deflection at Rated Capacity	NA	mm
Weight (approximate) :	NA	kg
Construction	Stainless Steel	
Environmental Protection	IP40	
Cable	connector	

TRX—TORQUE TRANSDUCER

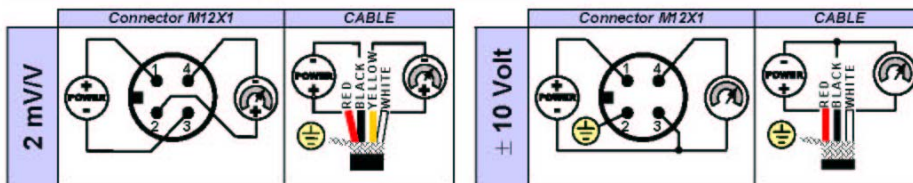
OUTLINE DIMENSIONS in millimeters



CODE: 2mV/V	CODE: ±10V	TORQUE	Ø A	B	C	D	E
/	MRT2A5NM	5 Nm	16 h6	30	25	5	3
/	MRT2A10NM	10 Nm					
MRT225NM *	MRT2A25NM	25 Nm					
MRT250NM	MRT2A50NM	50 Nm	25 h6	40	35	8	4
MRT2100NM	MRT2A100NM	100 Nm					
MRT2250NM	MRT2A250NM	250 Nm					
MRT2500NM	MRT2A500NM	500 Nm					

* 1mV/V

WIRING DETAIL



NOTE: If the dimensions or specification do not suit, PCM have an in-house design and build service that should satisfy your requirements.

OPTIONS

- | | |
|---------------|---------|
| 5-10 Nm | 1/4" Sq |
| 25-50Nm | 3/8" Sq |
| 100-250-500Nm | 1/2" Sq |

LOADING MODE

