

D100—Tension Link



FEATURES

- Capacities 20—100Te
- Sealed to IP65.
- Tension use.
- Accuracy 0.1% RO.

APPLICATIONS

- Lifting Applications.
- Process Control.
- Hanging Scales.

DESCRIPTION

The T-TL-D100 provides a simple device for tension measurement. The D100 is produced from stainless steel construction and is a laser welded assembly

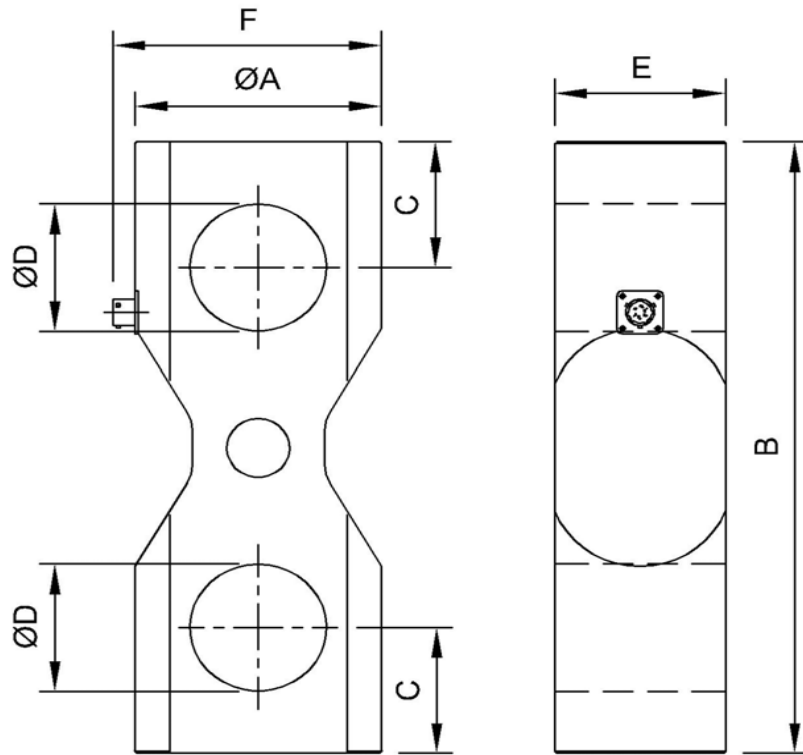
The load cell has been designed for lifting applications.

TYPICAL SPECIFICATION

PARAMETER	VALUE				UNITS
Capacities Range	20 - 30	50	75	100	Te
Rated Output	1.0 ±0.001				mV/V
Linearity & non repeatability	0.1				±% of Rated Output
Zero Balance	1.0				±% of Rated Output
Temperature Range: Operating	-20 to +70				°C
Temperature Range: Compensated	-10 to +40				
Temperature Effect: On Output	0.008				±% of Rated Output/°C
Temperature Effect: On zero	0.028				±% of Rated Load/°C
Safe Overload	150				% of Rated Capacity
Ultimate Overload	500	400	300	200	% of Rated Capacity
Excitation: Recommended	10				Volts AC or DC
Excitation: Maximum	18				
Input Impedance	420 ±20				ohm
Output Impedance	350 ±2				ohm
Insulation Resistance	>5				GΩ at 50VDC
Deflection at Rated Capacity	N/A				mm
Weight (approximate) :	~ 11	~ 19			kg
Construction	Stainless Steel				
Environmental Protection	IP65				
Cable	Connector				

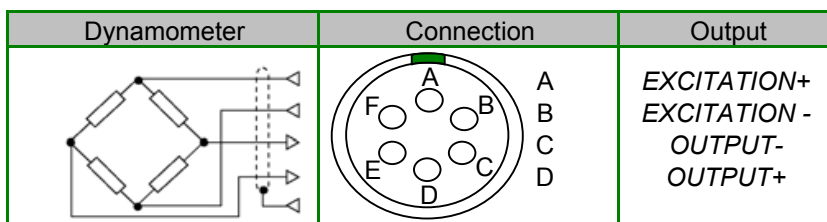
D100—Tension Link

OUTLINE DIMENSIONS in millimeters



CODE	LOAD	ØA	B	C	ØD	E	F
D10020TC25	20Te	100	280	50	58	78	114
D10030TC25	30Te						
D10050TC25	50Te						
D10075TC25	75Te	127	340	70	71	88	139
D100100TC25	100Te						

WIRING DETAIL



LOADING MODE

