

620—Bi-Directional S Type Load Cell



FEATURES

- Capacities 500—5000Kg
- Sealed to IP68.
- Tension & Compression use.
- Accuracy 0.05% RO.

APPLICATIONS

- Test Machines.
- Process Control.
- Small Tanks & Silos.
- Hanging Scales.

DESCRIPTION

The BD-ST-620 provides a simple measuring device for tension and compression measurement. The design has a welded seal to enable it to be used for a wide range of applications of process weighing and force measurement.

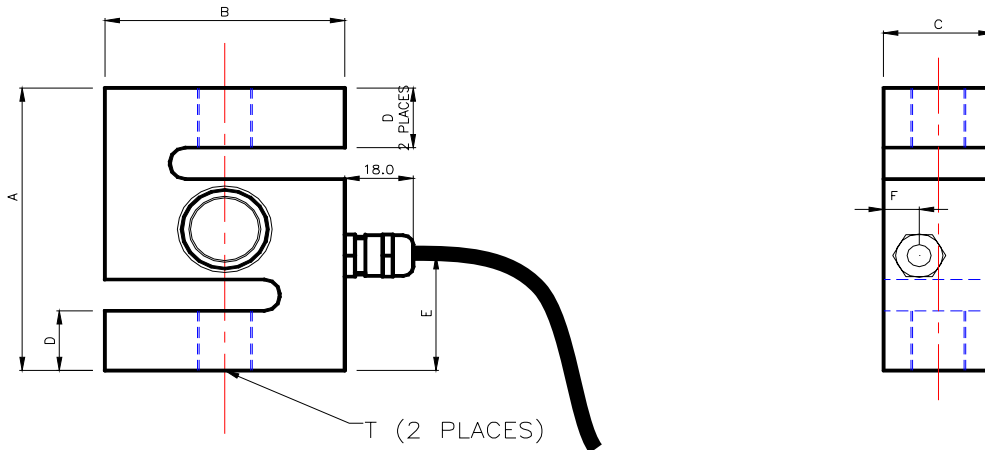
The 620 offers a choice of metric or unified bolt thread systems.

TYPICAL SPECIFICATION

PARAMETER	VALUE	UNITS
Capacities Range	0.. 500, 1000, 2000, 5000.	kg
Rated Output	2.0 ±0.1%	mV/V
Linearity & non repeatability	0.05	±% of Rated Output
Zero Return after 30 minutes	0.05	±% of Applied Load
Zero Balance	2.0	±% of Rated Output
Temperature Range: Operating	-30 to +90	°C
Temperature Range: Compensated	-10 to +40	
Temperature Effect: On Output	0.04	±% of Applied Output/°C
Temperature Effect: On zero	0.007	±% of Rated Output/°C
Safe Overload	150	% of Rated Capacity
Ultimate Overload	300	% of Rated Capacity
Excitation: Recommended	10	Volts AC or DC
Excitation: Maximum	15	
Input Impedance	400 nominal	ohm
Output Impedance	350 nominal	ohm
Insulation Resistance	>5	GΩ at 50VDC
Deflection at Rated Capacity	NA	mm
Weight (approximate) :	NA	kg
Construction	Stainless Steel	
Environmental Protection	IP68	
Cable	5m 6 core screened	

620—Bi-Directional S Type Load Cell

OUTLINE DIMENSIONS in millimeters



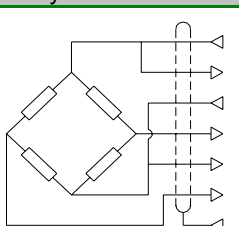
CAPACITY	A	B	C	D	E	F
500 - 2000KG	90	70	32	19	36.6	10.4
5000KG	120	100	45	26	60	13.8

Thread Type "T" By Capacity		
Capacity	Metric	Unified
500KG	M12 x 1.75	1/2"X20UNF
1000KG	M16 X 2.0	1/2"X20UNF
2000KG	M16 X 2.0	3/4"X16UNF
5000KG	M24X2.0	1"X12UNF

Optional rod end bearings are available—consult the sale office.

NOTE: If the dimensions or specification do not suit, PCM have an in-house design and build service that should satisfy your requirements.

WIRING DETAIL

Dynamometer	OUTPUT	CABLE
	EXCITATION+	<i>Blue</i>
	SENSE +	<i>Green</i>
	EXCITATION -	<i>Black</i>
	OUTPUT-	<i>Red</i>
	SENSE -	<i>Grey</i>
	OUTPUT+	<i>White</i>

LOADING MODE

