

Clamp-On Rope Tension Sensor

FEATURES

- Diameter Sizes 8mm – 40mm
- Sealed to IP65.
- Custom build dimensions available.

APPLICATIONS

- Overload and slack rope protection.
- Gantry / overhead cranes.



DESCRIPTION

The T-CORTS is a simple transducer that clamps onto the rope at the dead end on a crane system. It is mainly used for overload and slack rope detection when coupled with an LCA15 amplifier.

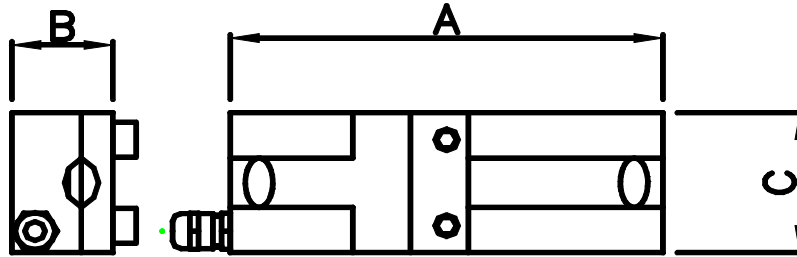
If the dimensions or specifications do not satisfy your application, then please contact PCM and their in-house design and build service may be able to supply to your requirements.

TYPICAL SPECIFICATION

PARAMETER	VALUE	UNITS
Diameter sizes	8-14, 15-20, 21-30, 31-40.	mm
Rated Output	0.7-1.5 nominal	mV/V
Linearity & non repeatability	5*	±% of Rated Output
Zero Return after 30 minutes	0.05	±% of Applied Load
Zero Balance	1.5	±% of Rated Output
Temperature Range: Operating	-30 to +80	°C
Temperature Range: Compensated	-10 to +60	
Temperature Effect: On Output	0.1	±% of Rated Output/°C
Temperature Effect: On zero	0.02	±% of Rated Load/°C
Safe Overload	200	% of Rated Capacity
Ultimate Overload	500	% of Rated Capacity
Excitation: Recommended	10	Volts AC or DC
Excitation: Maximum	15	
Input Impedance	350 nominal	ohm
Output Impedance	350 nominal	ohm
Insulation Resistance	>2	GΩ at 50VDC
Deflection at Rated Capacity	N/A	mm
Weight (approximate) :	N/A	kg
Construction	Plated alloy steel	
Environmental Protection	IP65	
Cable	5m 4 core screened	

Clamp-On Rope Tension Sensor

OUTLINE DIMENSIONS in millimeters



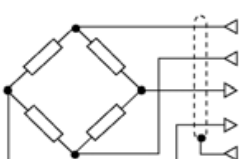
ROPE SIZE Ø	A	B	C
8 - 20mm	153	35 Min	45
21 - 40mm	300	72 Min	98

CAP HEAD BOLT TORQUE VALUES	
M8	20Nm
M12	67Nm
M14	107Nm

*Depending on the rope and external mechanical performance (pulleys and the number of falls etc). PCM recommend for use in overload and slack rope detection only.

NOTE: If the dimensions or specifications do not suit your application, PCM have an in-house design service that should satisfy your requirements.

WIRING DETAIL

Dynamometer	Output	Cable
	EXCITATION+ EXCITATION - OUTPUT+ OUTPUT-	RED BLUE GREEN YELLOW

LOADING MODE

