

Load Pin – Custom Design



Example: Externally Strain Gauged



Example: Internally Strain Gauged

FEATURES

- Capacities 0.5–300Te
- Waterproof and sealed to IP67
- Stainless Steel
- Single or dual bridges

APPLICATIONS

- In line Crane Weighing
- Heavy industry
- Offshore
- Aerospace

DESCRIPTION

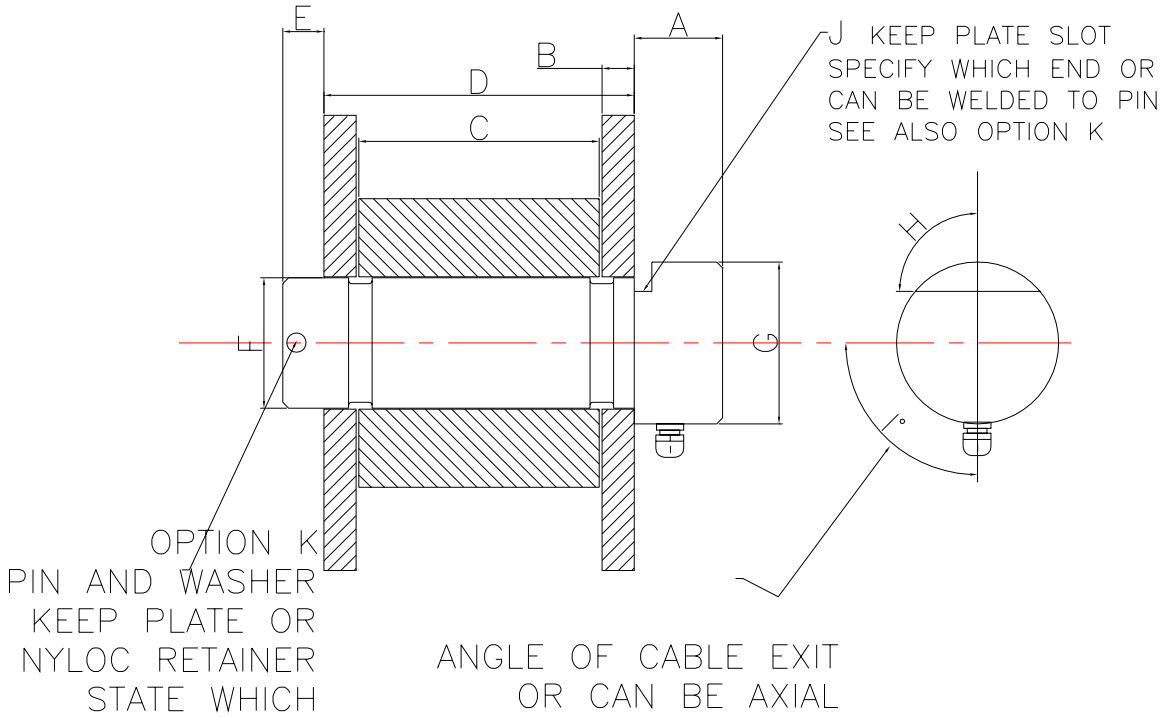
The T-LP provides a simple measuring device for tension measurement. All units are designed around the customer requirements. PCM request the attached questionnaire to be completed and sent to our design team. Once received PCM will confirm if the criteria is mechanically achievable and safe. A quotation will be supplied stating a competitive lead time. On receipt of a purchase order, an outline drawing and specification will be supplied for the customer for authorisation. Once received, PCM will commence manufacture. This process is done for all load pins. The units are supplied with calibration certificates using a BS EN ISO 7500-1 test machine traceable to National Standards. We recommend an in-situ calibration to obtain maximum performance.

TYPICAL SPECIFICATION

PARAMETER	VALUE	UNITS
Capacities Range	0.. 0.5, 2, 5, 10, 15, 25, 35, 50, 100 + higher capacities on request	Tonne
Rated Output	0.5-1.5 nominal	mV/V
Linearity & non repeatability	0.25–2	±% of Rated Output
Zero Return after 30 minutes	0.2	±% of Applied Load
Zero Balance	1.5	±% of Rated Output
Temperature Range: Operating Temperature Range: Compensated	-10 to +80 Ambient to + 70	°C
Temperature Effect: On Output Temperature Effect: On zero	0.1 0.02	±% of Applied Load/°C ±% of Rated Load/°C
Safe Overload	200	% of Rated Capacity
Ultimate Overload	500	% of Rated Capacity
Excitation: Recommended Excitation: Maximum	10 15	Volts AC or DC
Input Impedance	380 nominal	ohm
Output Impedance	350 nominal	ohm
Insulation Resistance	>2	GΩ at 50VDC
Deflection at Rated Capacity	NA	mm
Weight (approximate) :	NA	kg
Construction	17-4 ph Stainless Steel or Tool Steel	
Environmental Protection	IP67	
Cable	5m 7/0.2 4 core screened	

Load Pin—Custom Design

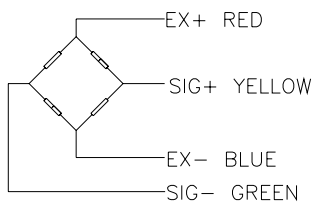
OUTLINE DIMENSIONS i- PLEASE COMPLETE THE TABLE



LOADING DIRECTION	MARK ON DRAWING	A	G
LOAD	TONNE	B	H
CABLE LENGTH OR PLUG/SKT		C	I*
OPERATIONAL TEMP RANGE		D	J
STAINLESS OR TOOL STEEL		E	K
		F	

NOTE: If the dimensions or specification do not suit, PCM have an in-house design and build service that should satisfy your requirements.

WIRING DETAIL



LOADING MODE

