

TLL—Tension Load Link



FEATURES

- Capacities 5—45Te
- Sealed to IP67.
- Tension use.
- Custom build dimensions available.

APPLICATIONS

- Overload protection.
- Crane weighing.
- Test rigs.

DESCRIPTION

The T-TLL is a tension load link mainly used in the crane / lifting industry for crane weighing or overload protection. The unit can be coupled with an indicator or a telemetry radio unit for ultimate mobility.

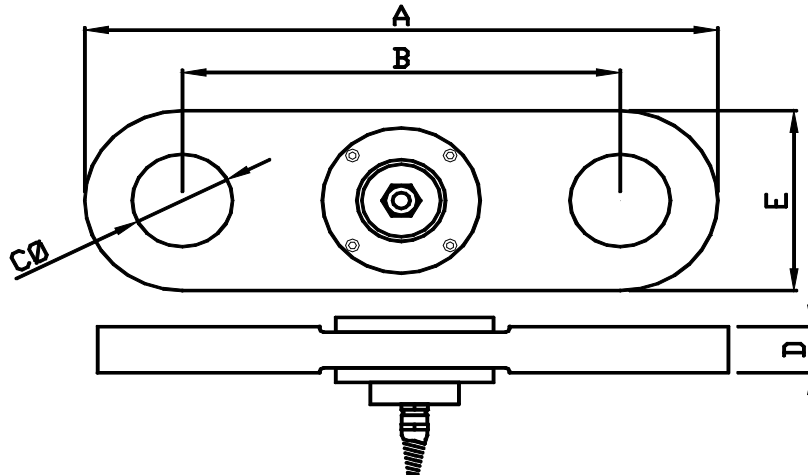
If the dimensions or specifications do not satisfy your application, then please contact PCM and their in-house design and build service may be able to supply to your requirements.

TYPICAL SPECIFICATION

PARAMETER	VALUE	UNITS
Capacities Range	0... 5, 10, 25, 45	Te
Rated Output	1.5 nominal	mV/V
Linearity & non repeatability	0.3	±% of Rated Output
Zero Return after 30 minutes	0.15	±% of Applied Load
Zero Balance	1.5	±% of Rated Output
Temperature Range: Operating	-30 to +80	°C
Temperature Range: Compensated	-10 to +60	
Temperature Effect: On Output	0.1	±% of Applied Load/°C
Temperature Effect: On zero	0.02	±% of Rated Output/°C
Safe Overload	200	% of Rated Capacity
Ultimate Overload	500	% of Rated Capacity
Excitation: Recommended	10	Volts AC or DC
Excitation: Maximum	18	
Input Impedance	350 nominal	ohm
Output Impedance	350 nominal	ohm
Insulation Resistance	>2	GΩ at 50VDC
Deflection at Rated Capacity	N/A	mm
Weight (approximate) :	N/A	kg
Construction	Plated alloy steel	
Environmental Protection	IP67	
Cable	5m 4 core screened	

TLL—Tension Load Link

OUTLINE DIMENSIONS in millimeters



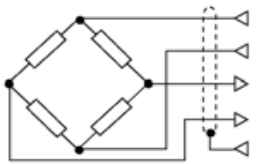
CAPACITY (Te)	A	B	C Ø	D	E
5, 10, 25	322	211	51.5	25.4	99
45	540	340	80.5	32	200

ACCESSORIES(Additional Options)



A carry case can be purchased to house both a load cell and an instrument. The foam insert of the case can be custom cut to suit.

WIRING DETAIL

Dynamometer	Output	Cable
	EXCITATION+ EXCITATION - OUTPUT+ OUTPUT-	<i>RED</i> <i>BLUE</i> <i>GREEN</i> <i>YELLOW</i>

LOADING MODE

