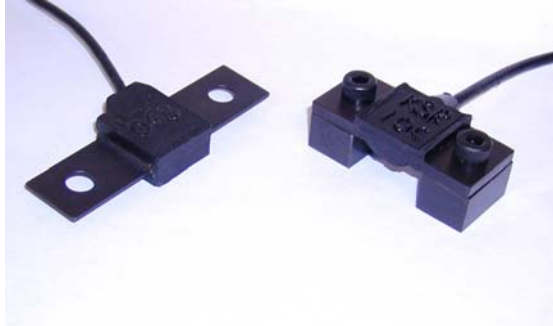


Bolt on Sensor



FEATURES

- Sealed to IP65.
- Custom build dimensions available.

APPLICATIONS

- Overload and protection.
- Overload protection for front end loaders

DESCRIPTION

The S-BOS is a simple sensor that locates on to a steel structure and monitors the strain that is directed through it. Consideration must be taken on the application and it's positioning for successful measurement. It is not recommended for level measurement on silo's.

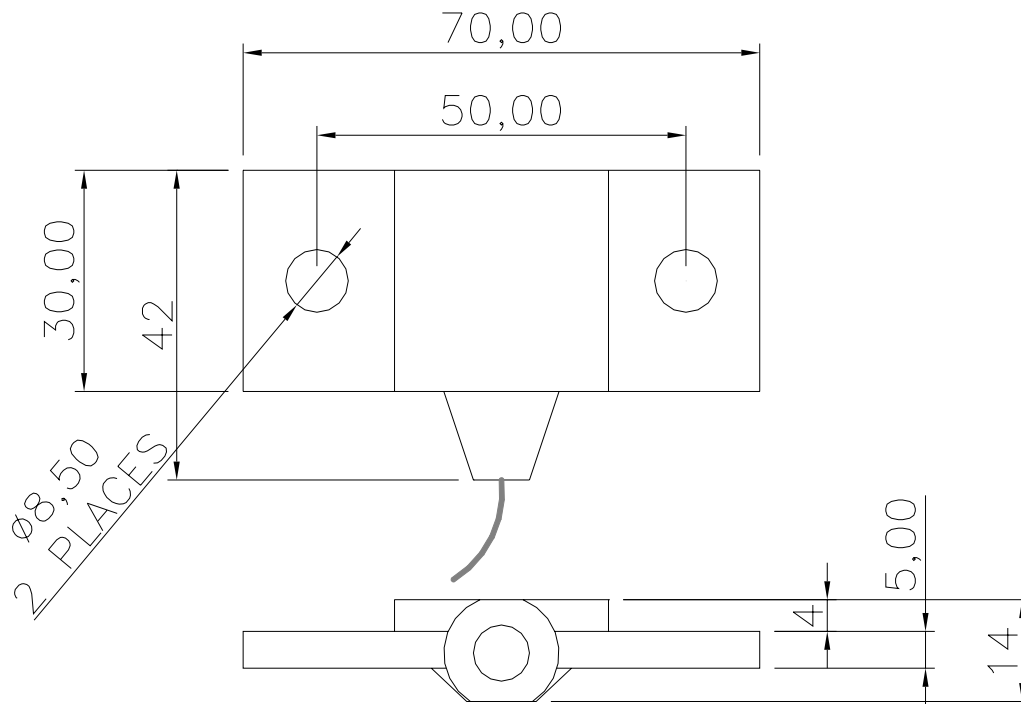
If the dimensions or specifications do not satisfy your application, then please contact PCM and their in-house design and build service may be able to supply to your requirements.

TYPICAL SPECIFICATION

PARAMETER	VALUE	UNITS
Capacity	±500	µε
Rated Output	0.7 nominal	mV/V
Linearity & non repeatability	1	±% of Rated Output
Zero Return after 30 minutes	0.05	±% of Applied Load
Zero Balance	1.5	±% of Rated Output
Temperature Range: Operating	-30 to +80	°C
Temperature Effect: On zero	0.02	±% of Rated Load/°C
Safe Overload	150	% of Rated Capacity
Ultimate Overload	300	% of Rated Capacity
Excitation: Recommended	10	Volts AC or DC
Excitation: Maximum	15	
Input Impedance	350 nominal	ohm
Output Impedance	350 nominal	ohm
Insulation Resistance	>2	GΩ at 50VDC
Deflection at Rated Capacity	NA	mm
Weight (approximate) :	NA	kg
Construction	Blackened alloy steel	
Environmental Protection	IP65	
Cable	5m 4 core screened	

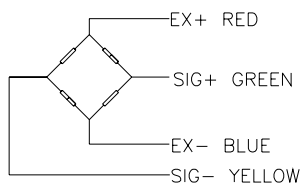
Bolt on Sensor

OUTLINE DIMENSIONS in millimeters



NOTE: If the dimensions or specification do not suit, PCM have an in-house design and build service that should satisfy your requirements.

WIRING DETAIL



LOADING MODE