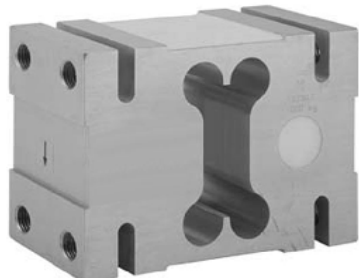


## 1320—Single Point Load Cell



### FEATURES

- Capacities 1000—2000Kg
- Sealed to IP66.
- Accuracy 0.05% RO.

### APPLICATIONS

- Very large platform scales.
- Hanging scales.
- Check weighing scales.

### DESCRIPTION

The SP-1320 is a high capacity single point load cell that is ideal for direct mounting in high capacity platforms up to 1200mm x 1200mm.

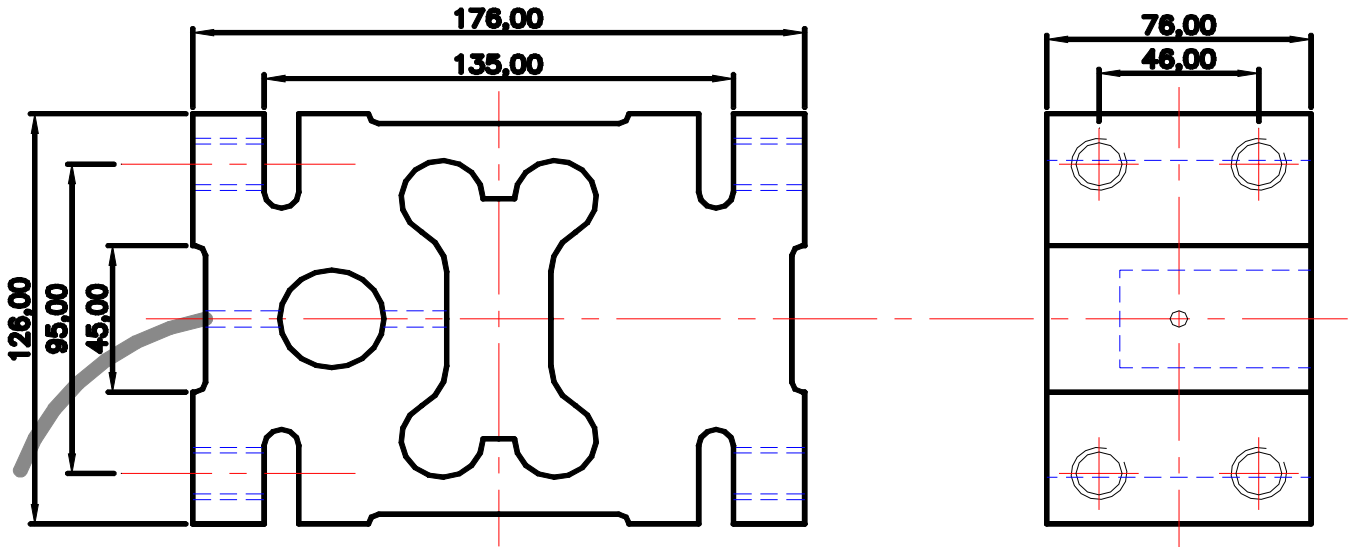
A special stage humidity resistant protective coating assures long term reliability.

### TYPICAL SPECIFICATION

PARAMETER	VALUE	UNITS
Capacities Range	0... 1000, 1500, 2000	kg
Rated Output	2.0 ±0.2	mV/V
Linearity & non repeatability	0.05	±% of Rated Output
Zero Return after 30 minutes	0.03	±% of Applied Load
Zero Balance	0.2	±mV/V
Temperature Range: Operating	-20 to +70	°C
Temperature Range: Compensated	-10 to +40	
Temperature Effect: On Output	0.003	±% of Rated Output/°C
Temperature Effect: On zero	0.01	±% of Rated Load/°C
Safe Overload	150	% of Rated Capacity
Ultimate Overload	300	% of Rated Capacity
Excitation: Recommended	10	Volts AC or DC
Excitation: Maximum	15	
Input Impedance	415 nominal	ohm
Output Impedance	350 nominal	ohm
Insulation Resistance	>2	GΩ at 50VDC
Deflection at Rated Capacity	N/A	mm
Weight (approximate) :	N/A	kg
Construction	Anodized Aluminium	
Environmental Protection	IP66	
Cable	5m 6 core screened	

# 1320—Single Point Load Cell

## OUTLINE DIMENSIONS in millimeters

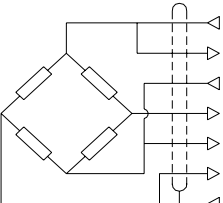


**NOTE: The recommended Torque Value: 165.0 Nm.**

**Maximum platform size = 1200 x 1200mm**

NOTE: If the dimensions or specifications do not suit your application, PCM have an in-house design service that should satisfy your requirements.

### WIRING DETAIL

Dynamometer	OUTPUT	CABLE
	EXCITATION+ SENSE + EXCITATION - OUTPUT+ SENSE - OUTPUT- -----	<i>Green</i> <i>Blue</i> <i>Black</i> <i>Red</i> <i>Brown</i> <i>White</i> <i>Shield*</i>

### LOADING MODE

