

Hydraulic Load Cell



FEATURES

- Compact design.
- Flexibility in the design / build options.

APPLICATIONS

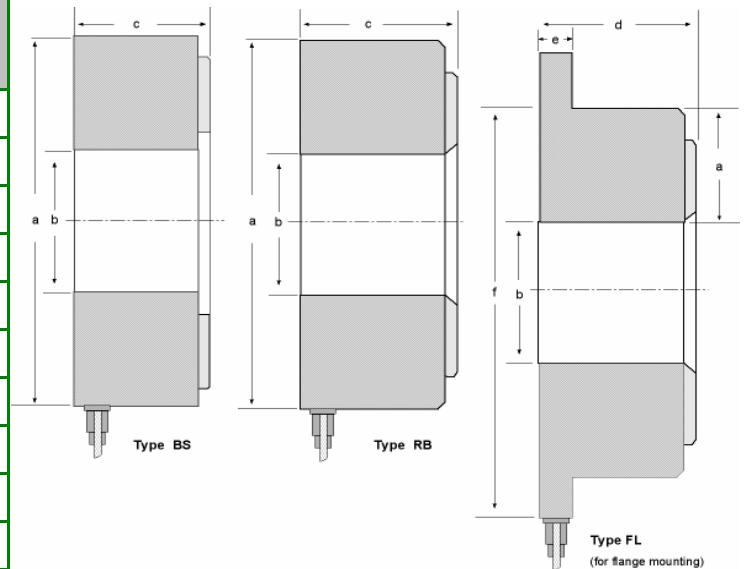
- Rolling mill presses.
- Offshore.
- Hazardous areas—(hydraulic only).

DESCRIPTION

The S-HLC is a simple design, robust in construction and has given many years of excellent service. The load cells are used in a diverse range of industries to measure varying forces including tension, compression, tension/compression and torque. Standard gauge sizes are 3", 4", 6" and 10" diameter, and units can be calibrated in lbf, tons, kg, kN etc, as required. Electrical contact gauges, pressure switches and transducers can be used in addition to or in place of the standard range. Digital indicators and indicator/alarms can also be offered in addition to or in place of our standard dial readout. Most existing systems can be converted to digital readouts

TYPES S, RB, FL

Model	a	b	c	d	e	f	Capacity Range (tons)
A	2.00	0.625	1.25	1.43	0.437	3.00	0-3
B	3.75	1.062	1.81	2.06	0.437	6.00	0-6
C	4.50	1.875	2.00	2.37	0.437	6.50	0-12
D	7.06	3.375	2.37	2.75	0.625	10.00	0-50
E	10.50	5.625	3.00	3.00	0.750	13.50	0-120
H	2.25	0.750	1.19	1.50	0.437	3.75	0-3
O	6.75	3.75	1.90	2.25	0.437	8.00	0-20
P	2.69	1.375	1.12	1.25	0.437	3.75	0-2
S	7.00	2.25	2.37	2.50	0.625	10.00	0-50
CX	6.00	2.50	2.12	2.50	0.625	8.25	0-20
DX	8.50	4.00	3.00	3.00	0.625	11.00	0-80



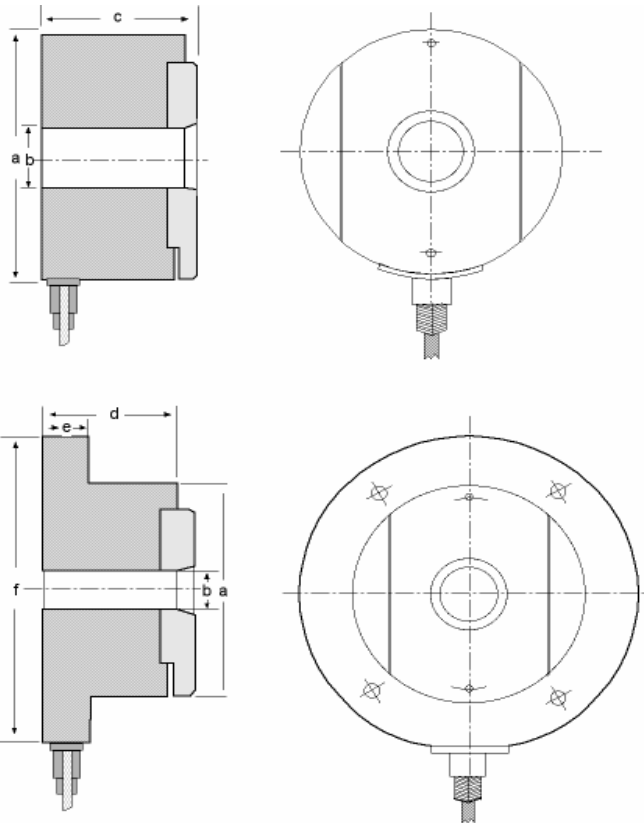
Dimensions in inches

a = Outside diameter
 b = Clearance for rod diameter
 c = Overall height (No retaining ring)
 d = Overall height
 e = Thickness of flange
 f = Diameter of flange

Hydraulic Load Cell

OUTLINE DIMENSIONS in inches

TYPES AT (Anti-Twist Facility)



a = Outside diameter
 b = Clearance for rod diameter
 c = Overall height (No retaining ring)
 d = Overall height
 e = Thickness of flange
 f = Diameter of flange

Model	a	b	d	e	f	Capacity range (ton)
A	2.25	0.625	1.43	0.437	3.25	0-3
B	4.125	1.062	2.06	0.437	6.25	0-6
C	5.00	1.875	2.37	0.437	7.25	0-12
D	7.25	3.375	2.75	0.625	10.00	0-50
H	2.50	0.750	1.50	0.437	4.00	0-3
O	7.00	3.750	2.25	0.437	8.25	0-20
P	3.00	1.375	2.25	0.437	8.00	0-2