

C2S—Diaphragm Load Cell

FEATURES

- Capacities 0..100Kg — 0..200Te
- Sealed to IP68.
- Compression use
- Single wheatstone bridge.

APPLICATIONS

- Test Machines.
- Misaligned loading applications.
- Restricted height constraints.
- Virtually all industries.



DESCRIPTION

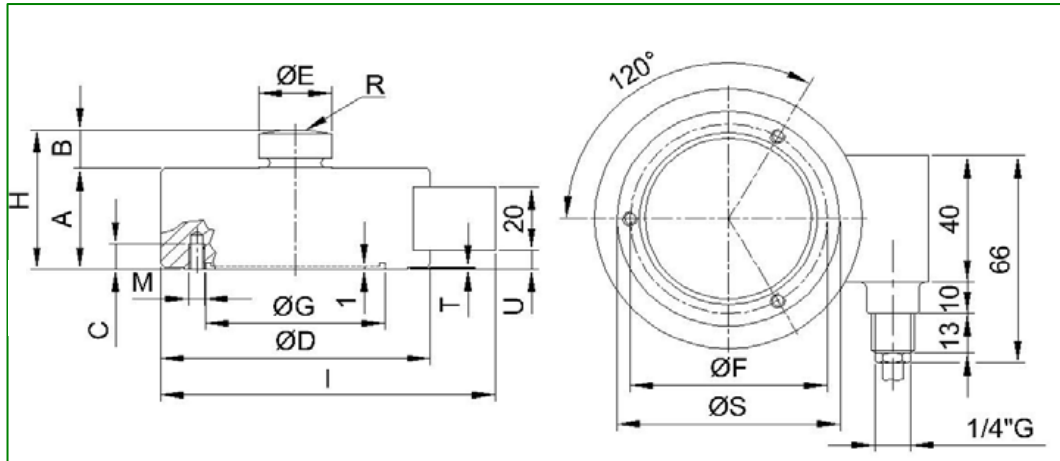
Low profile load cell produced from stainless steel. The C2S is produced for long term stability and is completely laser welded, suitable for dynamic applications. This is a standard design load cell.

TYPICAL SPECIFICATION

PARAMETER	VALUE	UNITS
Capacities Range	0.. 100, 250, 500	Kg
	0..1, 2.5, 5, 7.5, 10, 20, 30, 50, 75, 100, *150, *200	Te
Rated Output	2.0 nominal	mV/V
Linearity & non repeatability	0.05	±% of Rated Output
Zero Return after 30 minutes	0.025	±% of Applied Load
Zero Balance	1.0	±% of Rated Output
Temperature Range: Operating	-20 to +70	°C
Temperature Range: Compensated	-10 to +40	
Temperature Effect: On Output	0.0015	±% of Rated Output/°C
Temperature Effect: On zero	0.0015	±% of Rated Load/°C
Safe Overload	150	% of Rated Capacity
Ultimate Overload	300	% of Rated Capacity
Excitation: Recommended	10	Volts AC or DC
Excitation: Maximum	18	
Input Impedance	700 nominal	ohm
Output Impedance	700 nominal	ohm
Insulation Resistance	>5	GΩ at 50VDC
Deflection at Rated Capacity	NA	mm
Weight (approximate) :	3.4	kg
Construction	Stainless steels	
Environmental Protection	IP68	
Cable	5m PVC core screened	

C2S—Diaphragm Load Cell

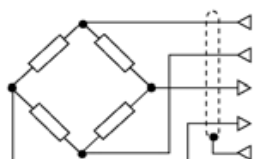
OUTLINE DIMENSIONS in millimetres



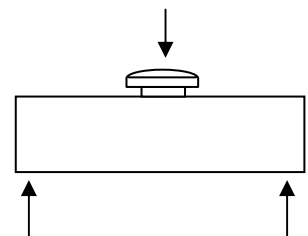
CODE (CLASS C1)	CODE (CLASS C2)	CODE (CLASS C3)	LOAD	A	B	C	ØD	ØE	ØF	ØG	H	I	M	No. M	R	S	T	U
CC2S82100KC15	CC2S82100KC25	CC2S82100KC35	100Kg	32	12	11	82	22	68	52.3	44	102	M8	3	50	60	0.3	6
CC2S82250KC15	CC2S82250KC25	CC2S82250KC35	250Kg															
CC2S82500KC15	CC2S82500KC25	CC2S82500KC35	500Kg															
CC2S821TC15	CC2S821TC25	CC2S821TC35	1Te															
CC2S822TC15	CC2S822TC25	CC2S822TC35	2.5Te															
CC2S825TC15	CC2S825TC25	CC2S825TC35	5Te															
CC2S827TC15	CC2S827TC25	CC2S827TC35	7.5Te															
CC2S8210TC15	CC2S8210TC25	CC2S8210TC35	10Te															
CC2S12620TC15H	CC2S12620TC25H	CC2S12620TC35H	20Te	50	14	12	126	35	90	77.3	64	148	M8	3	160	100	0.5	15
CC2S12630TC15H	CC2S12630TC25H	CC2S12630TC35H	30Te															
CC2S16550TC15	CC2S16550TC25	CC2S16550TC35	50Te	60	20	20	165	60	130	92.3	80	188	M16	4	300	115	1	17
CC2S16575TC15	CC2S16575TC25	CC2S16575TC35	75Te															
CC2S165100TC15	CC2S165100TC25	CC2S165100TC35	100Te															
CC2S200150TC15	CC2S200150TC25	*Not available	150Te	80	30	20	200	80	152	107	110	223	M16	4	300	134	1	23
CC2S200200TC15	CC2S200200TC25	*Not available	200Te															

NOTE: If the dimensions or specification do not suit, PCM have an in-house design and build service that should satisfy your requirements.

WIRING DETAIL

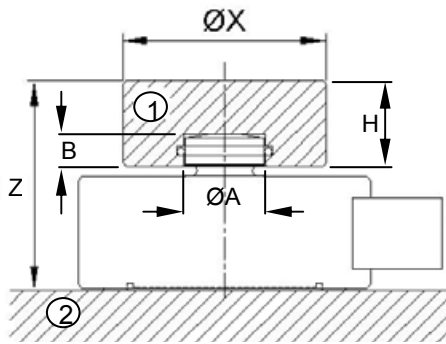
Dynamometer	OUTPUT	CABLE
	EXCITATION+ EXCITATION - OUTPUT+ OUTPUT- -----	Red Black White Yellow Shield*

LOADING MODE

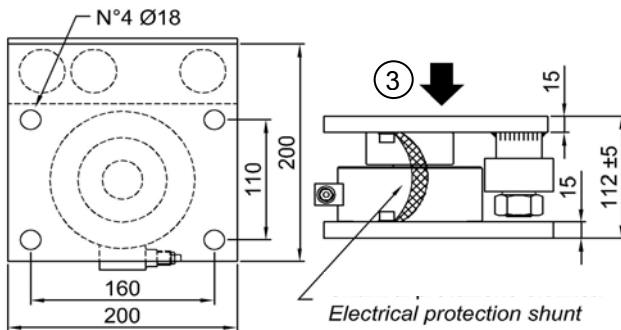


C2S—Diaphragm Load Cell

ACCESSORIES. OUTLINE DIMENSIONS in millimetres

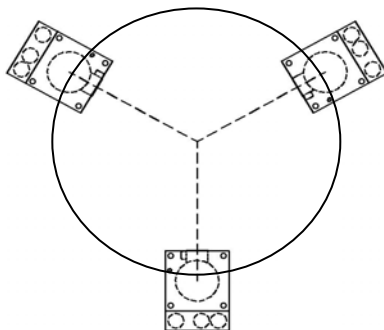


C2S Capacities	Accessories Code	Item	ØA	B	H	ØX	Z
100, 250, 500 kg 1, 25, 5, 7.5 10 Te	CTIC22	1	23	9	24	57	59
	CPB120D82	2	/	/	/	/	/
	CUPC2	3	/	/	/	/	/
20, 30 Te	CTIC35	1	36	12	30	76	82
	CUPC3	3	/	/	/	/	/
50, 75, 100 Te	CTIC60	1	61	12	38	126	106
150, 200 Te	CTIC80	1	81	21	68	128	157



NOTE: If the dimensions or specification do not suit, PCM have an in-house design and build service that should satisfy your requirements.

Circular system with 3 supporting points



Square system with 4 supporting points

