

120—Compression Load Cell



FEATURES

- Capacities 5—50Te
- Sealed to IP67.
- Accuracy 0.05% RO.

APPLICATIONS

- Truck scales, weighbridges.
- Hoppers for process control.
- Tank and silo weighing.
- Harsh environment.

DESCRIPTION

The C-120 is a high capacity compression load cell produced from stainless steel housing and is a nickel plated alloy steel compression element.

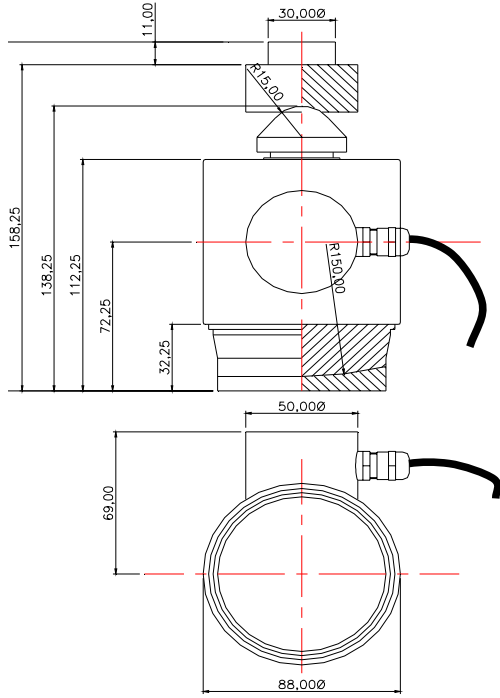
This unit is suitable for all heavy duty weighing applications and gives the user high accuracy and low installation costs.

TYPICAL SPECIFICATION

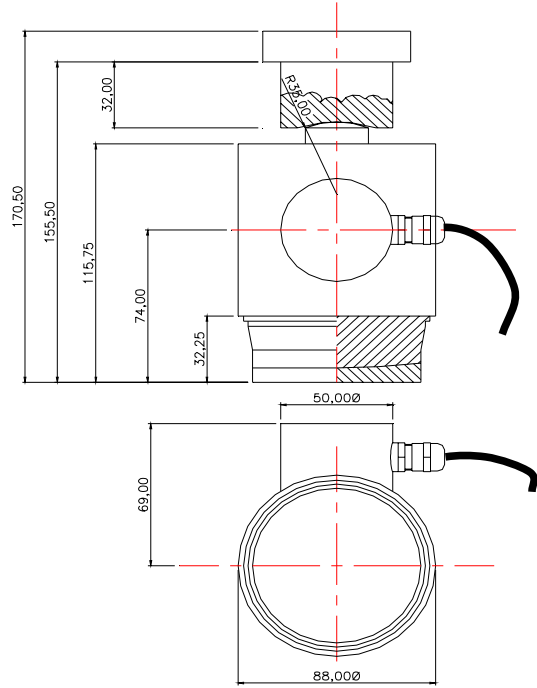
PARAMETER	VALUE	UNITS
Capacities Range	0.. 5, 10, 20, 30, 50	Te
Rated Output	1.5 ±0.1	mV/V
Linearity & non repeatability	0.05	±% of Rated Output
Zero Return after 30 minutes	0.05	±% of Applied Load
Zero Balance	1.5	±% of Rated Output
Temperature Range: Operating	-20 to +70	°C
Temperature Range: Compensated	-10 to +40	
Temperature Effect: On Output	0.005	±% of Applied Load/°C
Temperature Effect: On zero	0.01	±% of Rated Output/°C
Safe Overload	150	% of Rated Capacity
Ultimate Overload	200	% of Rated Capacity
Excitation: Recommended	10	Volts AC or DC
Excitation: Maximum	15	
Input Impedance	670 nominal	ohm
Output Impedance	605 nominal	ohm
Insulation Resistance	>2	GΩ at 50VDC
Deflection at Rated Capacity	<0.3	mm
Weight (approximate) :	NA	kg
Construction	Stainless Steel Hsg, Nickel plated element	
Environmental Protection	IP67	
Cable	15m 6 wire PVC screened	

120—Compression Load Cell

OUTLINE DIMENSIONS in millimeters



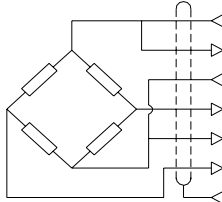
Capacity 5 - 30Te



Capacity 50Te

NOTE: If the dimensions or specification do not suit, PCM have an in-house design and build service that should satisfy your requirements.

WIRING DETAIL

Dynamometer	OUTPUT	CABLE
	EXCITATION+ SENSE + EXCITATION - OUTPUT+ SENSE - OUTPUT-	Green Blue Black Red Brown White Shield*

LOADING MODE

