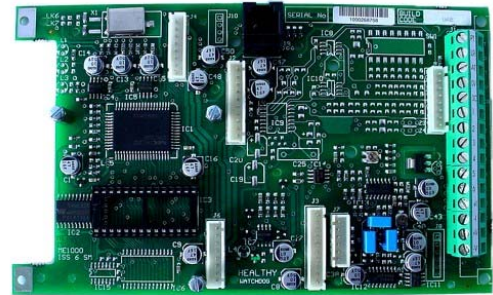


# Universal Amplifier/Digitiser

## Features

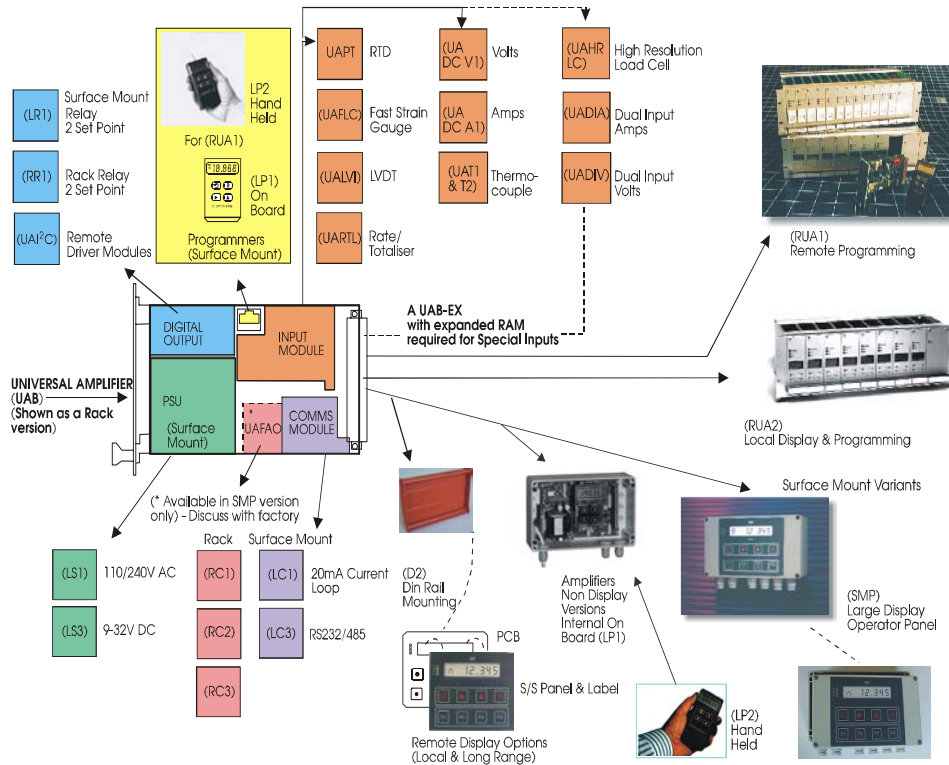
- Dimensions 100 x 166mm



## Introduction

This range of products are designed to allow for a diverse combination of installation options. Base upon a Eurocard sized central CPU. It is possible to select from a range of input and output 'plug in' options, to create an effective solution to the needs of most industrial process installations. Wall, DIN Rail and Rack mounted amplifiers are available. Common process input modules are suitable for all types of mounting, as are Digital (relay),

Analogue (Voltage and Current), and Communications output modules also Display and Programming types. Certain input modules require larger than standard RAM, CPU boards and where such inputs are required the ordering system automatically creates Expanded RAM boards to enable this to be achieved. The diagram shows the combinations and options, based for ease of explanation, upon a Rack version with the available choice of modules which can be selected.



© In the interest of continued product development, Procter & Chester (Measurements) Ltd reserves the right to alter product specifications without prior notice.