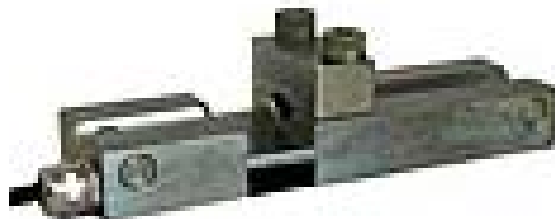




Clamp-On Sensor

Rope Tension Protection

8mm – 40mm rope diameter



FEATURES

- Plated tool steel construction.
- Rugged load cell design.
- Sealed to IP65.
- Simple to install – clamps on the dead end.
- Recommendation to use with LCA15 + relays instrumentation for slack rope and overload trips. See data sheet.
- Custom build available.

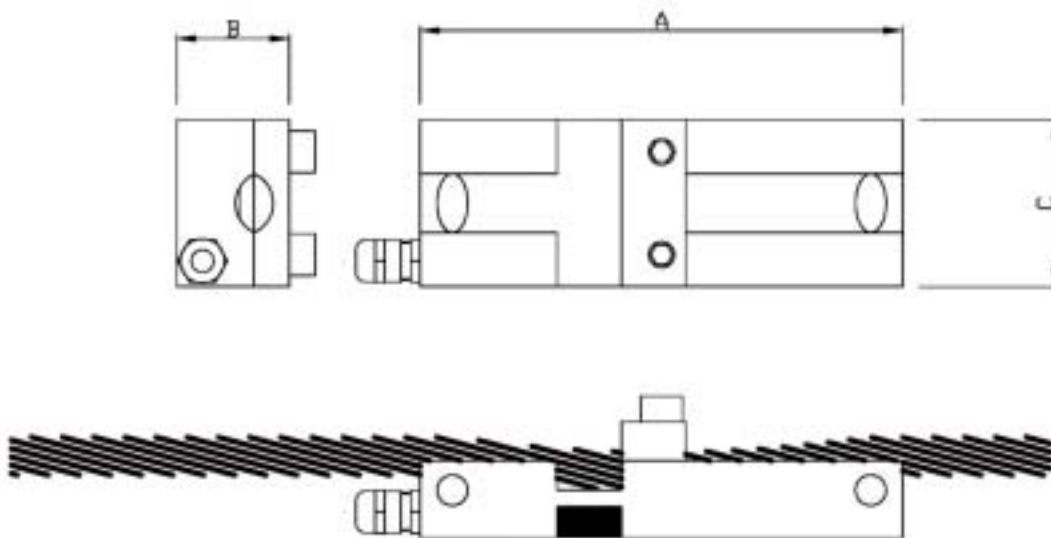
APPLICATIONS

- Lifting protection.
- Gantry / over head cranes.
- Overload and slack rope protection



Procter & Chester Measurements

PARAMETER		UNITS
Rated Capacities	8 – 40	Mm
Rated Output	0.7-1.5 nominal	MV/V
Linearity & Repeatability	1-3*	±% of Rated Output
Zero Return after 30 minutes	0.15	±% of Applied Load
Zero Balance	1.5	±% of Rated Output
Temperature Range: Operating	-10 to +80	°C
Temperature Range: Compensated	-10 to +60	
Temperature Effect: On Output	0.1	±% of Applied Load/°C
Temperature Effect: On zero	0.02	±% of Rated Load/°C
Safe Overload	200	% of Rated Capacity
Ultimate Overload	500	% of Rated Capacity
Excitation: Recommended	10	Volts AC or DC
Excitation: Maximum	15	
Input Impedance	350 nominal	ohm
Output Impedance	350 nominal	ohm
Insulation Impedance	>2000	megaohm
Deflection at Rated Capacity	NA	mm
Weight (approximate) :	NA	kg
Construction	Plated tool steel	
Environmental Protection	IP65	
Cable	5m 4 core screened	
Connections – Produces a positive signal in compression.	Excitation + Red Excitation – Blue Signal + Green Signal – Yellow	The Screen is not connected to the load cell body.
Document Revision Date	0505	



Rope Ø Size.	A	B	C	Bolt Torque
8 – 20 mm	150mm	43mm	52mm	67Nm
21 – 40 mm	300mm	72mm	98mm	107Nm

*Dependant on rope performance.