

Shear Beam Load Cell

3510 Series

300Kg – 5000Kg

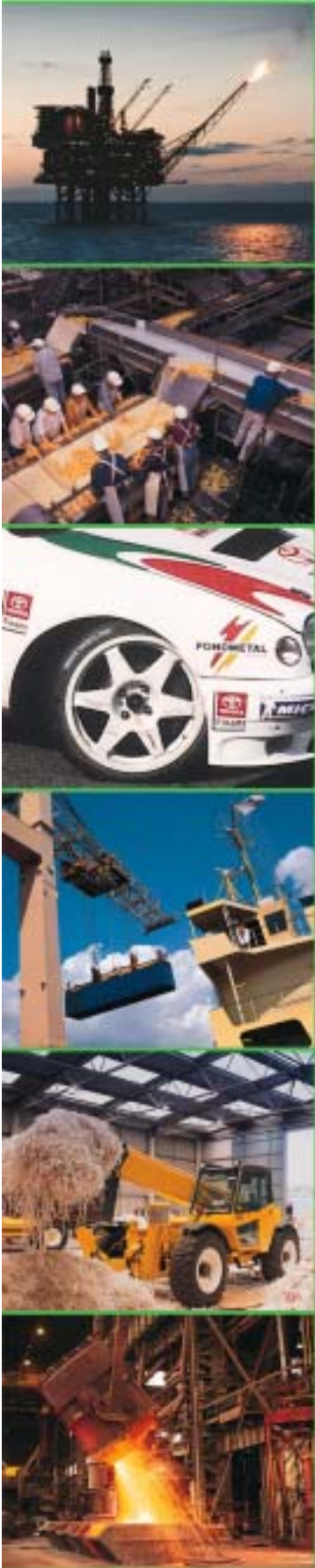


FEATURES

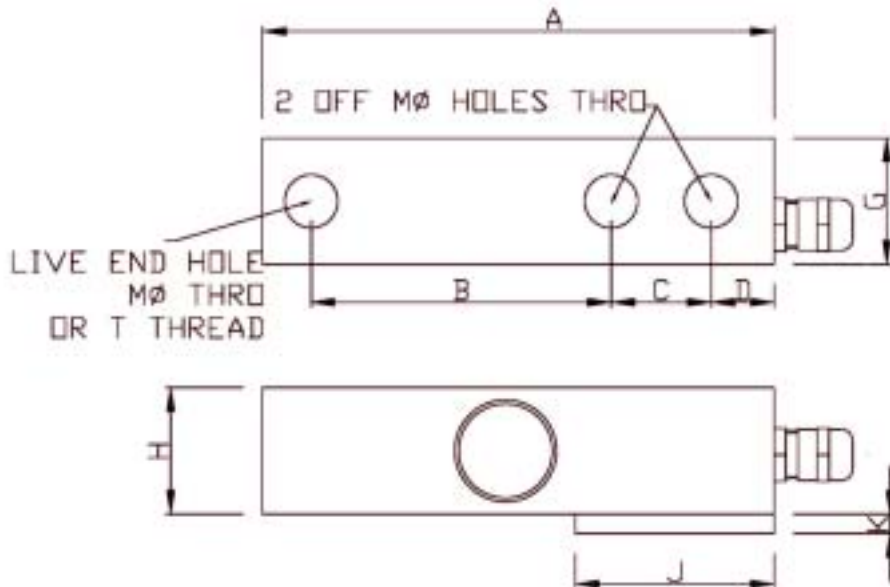
- Stainless Steel
- Fully Welded construction
- Sealed to IP68.
- Load Cell Accuracy 0.03% RO.
- Simple to install.
- Low profile industry standard

APPLICATIONS

- Tanks & silos.
- Hostile environments.
- Industrial Platforms.
- Pallet truck weighers.



PARAMETER		UNITS
Rated Capacities	300, 500, 1000, 2000, 5000	Kg
Rated Output	2.0 ±0.1%	MV/V
Total Error	0.03	±% of Rated Output
Zero Return after 30 minutes	0.025	±% of Applied Load
Zero Balance	2	±% of Rated Output
Temperature Range: Operating	-30 to +80	°C
Temperature Range: Compensated	-10 to +40	
Temperature Effect: On Output	0.0014	±% of Applied Load/°C
Temperature Effect: On zero	0.0035	±% of Rated Load/°C
Safe Overload	150	% of Rated Capacity
Ultimate Overload	300	% of Rated Capacity
Excitation: Recommended	10	Volts AC or DC
Excitation: Maximum	15	
Input Impedance	350 nominal	ohm
Output Impedance	350 nominal	ohm
Insulation Impedance	>1000	megaohm
Deflection at Rated Capacity	<0.4	mm
Weight (approximate) :	NA	kg
Construction	Stainless Steel	
Environmental Protection	IP68	
Cable	5m 4 core screened	
Connections – Produces a positive signal in compression.	Excitation + Blue Sense + Green Excitation – Black Sense – Grey Signal + White Signal – Red	The Screen is not connected to the load cell body.
	0505	



CAP.	A	B	C	D	G	H	J	K
300 – 2000Kg	130	76.2	25.4	15.8	32	32	50.5	NOT INCL
5000Kg	171.5	95.25	38.1	19	36.5	48	70	NOT INCL

Dimensions in mm.