

Shear Beam Load Cell

3410 Series

250Kg – 2000Kg

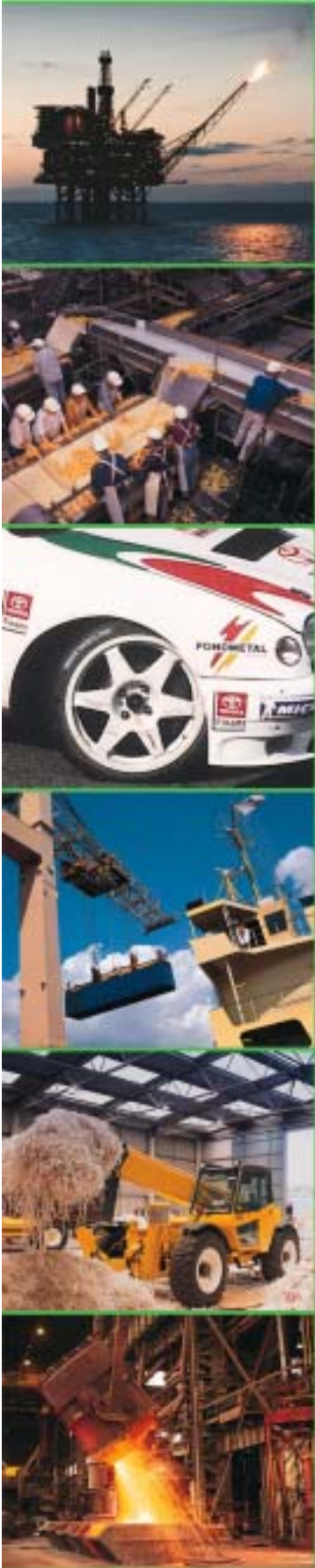


FEATURES

- Nickel Plated Alloy Steel
- Sealed to IP67.
- Load Cell Accuracy 0.05% RO.
- Simple to install.
- Low profile industry standard

APPLICATIONS

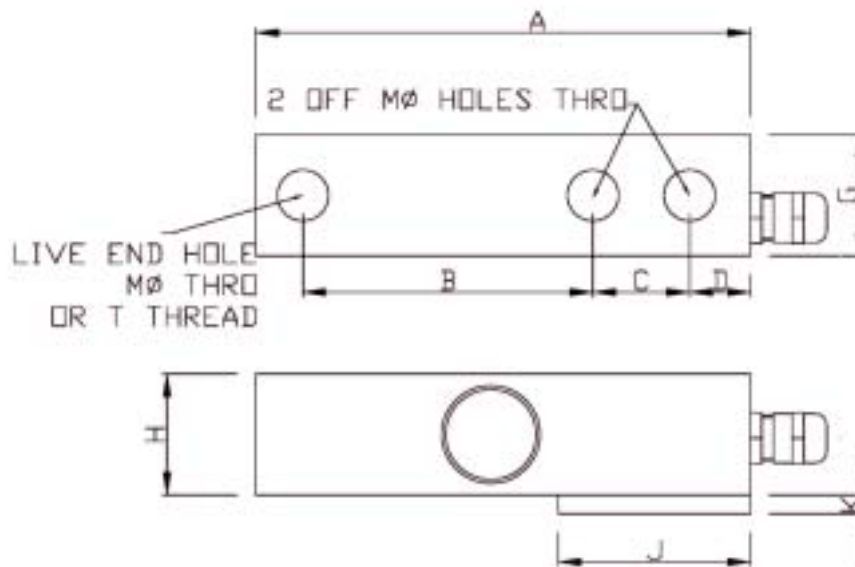
- Tanks & silos.
- Hostile environments.
- Industrial Platforms.
- Pallet truck weighers.





Procter & Chester Measurements

PARAMETER		UNITS
Rated Capacities	250, 500, 1000, 2000	Kg
Rated Output	2.0 ±0.1%	MV/V
Total Error	0.05	±% of Rated Output
Zero Return after 30 minutes	0.05	±% of Applied Load
Zero Balance	3	±% of Rated Output
Temperature Range: Operating	-30 to +80	°C
Temperature Range: Compensated	-10 to +40	
Temperature Effect: On Output	0.004	±% of Applied Load/°C
Temperature Effect: On zero	0.007	±% of Rated Load/°C
Safe Overload	150	% of Rated Capacity
Ultimate Overload	300	% of Rated Capacity
Excitation: Recommended	10	Volts AC or DC
Excitation: Maximum	15	
Input Impedance	380 nominal	ohm
Output Impedance	350 nominal	ohm
Insulation Impedance	>1000	megaohm
Deflection at Rated Capacity	<0.4	mm
Weight (approximate) :	NA	kg
Construction	Electroless Nickel Plated Steel	
Environmental Protection	IP67	
Cable	5m 6 core screened	
Connections – Produces a positive signal in compression.	Excitation + Red Sense + Blue Excitation – Black Sense – Brown Signal + Green Signal – White	The Screen is not connected to the load cell body.
	0505	



CAP.	A	B	C	D	G	H	J	K	M	TORQUE
250 - 1000Kg	130	76.2	25.4	16	30.5	30.5	57	4	M12 X 1.75	76NM
2000Kg	130	76.2	25.4	16	30.5	36	57	4	M12 X 1.75	76NM

Dimensions in mm.

Note: Spacer plate not included.